



REZAROMA

AROMA DIFFUSER

PRODUCT MANUAL



Before using product, please read this instructions carefully and safe-keeping.

- ❖ Don't use the overladen Power socket, power wire and broken power wire plugs;
- ❖ Don't try to open the product, If happen abnormal phenomenon, Please contact with the relevant Technical department;
- ❖ If lightning and thunder, please do not touch the power supply cable.

BASIC PARAMETERS

1

Model

Dimensions

109x280MM

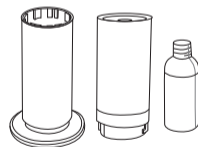
Upply Voltage

Total Power

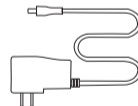
6W

Coverage Area

INSPECTION EQUIPMENT



Aroma diffuser



Power Adaptor



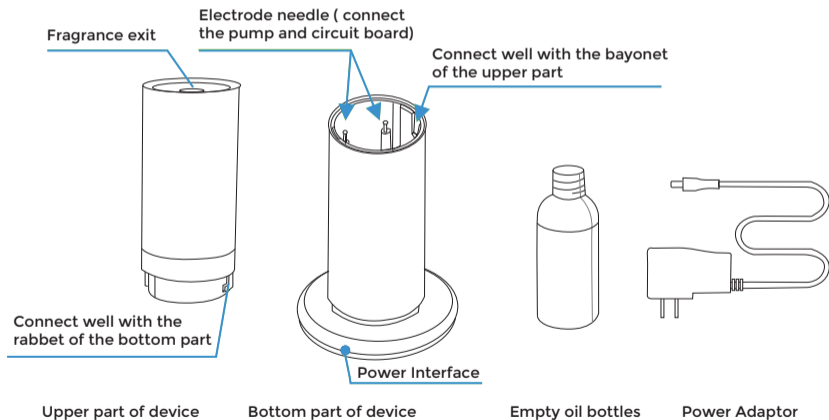
Written materials

Checking and make sure the packaging is complete when you first open it, (it includes machine, fragrance bottle, power cord, manual), if any problem, please contact with us soon.

METHOD OF USE

2

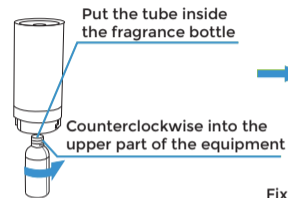
1. Open the packaging and take out the equipment



METHOD OF USE

3

*Figure 1



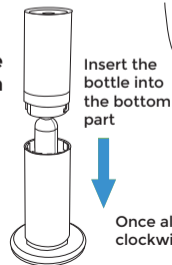
*Figure 2



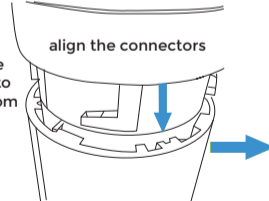
2. Open fragrance bottle cap, then keep Vertical-Horizontal rotate it install into the upper part of the device where thread on connection. (Note: Pay more attention on it when install fragrance bottle, to prevent fragrance overflow)

3. Take the upper part of the device (after instal fragrance bottle) and aligned well with the bottom part's bayonet and rabet, the Forced under pressure, and then clockwise clamping.

*Figure 3



*Figure 4



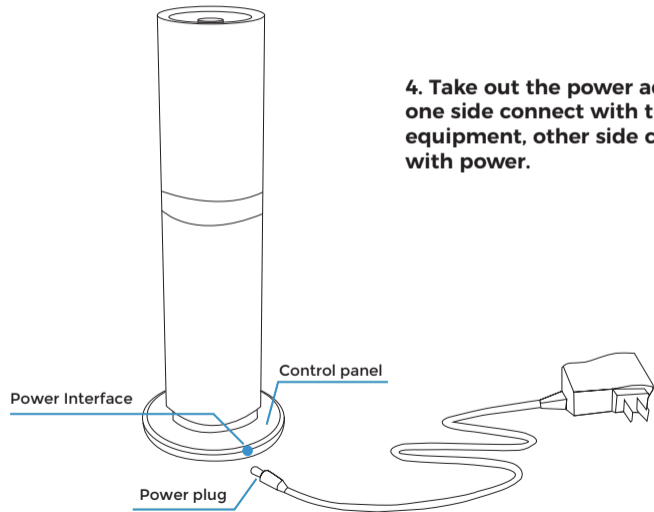
*Figure 5

Once aligned press firmly and rotate clockwise to lock and snap into place

METHOD OF USE

4

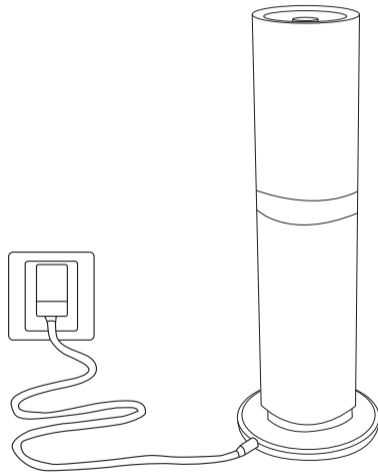
4. Take out the power adaptor, one side connect with the equipment, other side connect with power.



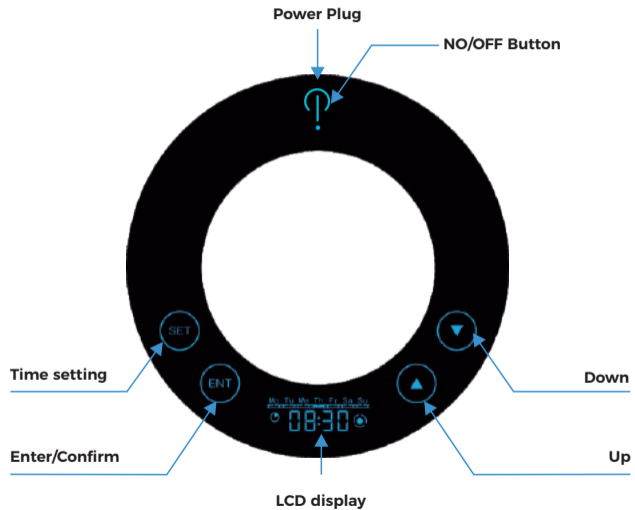
METHOD OF USE

5

5. Connecting the power, when the indicator turns green, equipment starts to work.

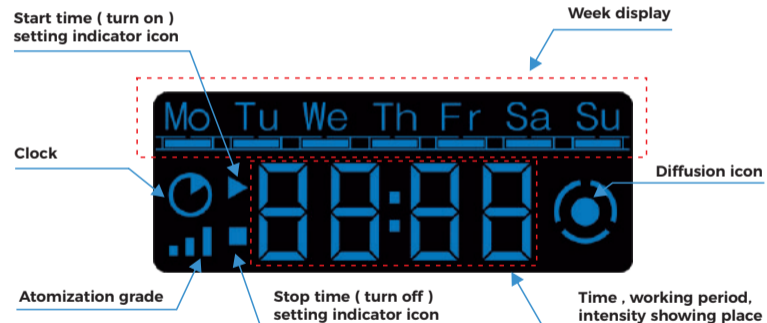


SETTING PANEL



6

SETTING PANEL










7



The screen lights off and the machine will be locked in about 25 seconds if no operation; Keep touching button SET (About 3 seconds) , the screen will automatically unlock.

LOCAL TIME SETTING

- 1) Unlock the setting program : touch and hold SET for 3 seconds till hear a “beep” sound , LCD shows 
- 2) Touch ENT , the hour figure flash, touch  or  to adjust it, then touch ENT To confirm, then minute figure flash, touch  or  to adjust it, then touch ENT to confirm.
- 3) Then the weekday “Su” will flash (means Sunday), touch  or  to adjust. touch ENT to confirm and finish.

- 4) During the setting, touch and hold SET for 3 seconds to exit.

OPERATION Periods Setting (5 Periods)

- 1) Set the start time : At the setting program unlock state, touch SET , LCD shows






“ 01 ” means the first period, touch SET to enter the setting, LCD shows



then touch ENT , hour to figure flash , touch  or  to adjust, touch

ENT to confirm. By the same way, to finish the hour, minute.

Weekday Setting:

After minute setting, touch SET Button, LCD shows  , the day of week will flash, if this day need to be worked, press  button to confirm, if this day no need to be worked, press  button to delete. Any weekday working group can be set by yourself.

- 2) Set the end of time: Touch SET , LCD shows  touch ENT to set it.

PROGRAM SETTING

3) Touch **SET** to enter the 2nd period setting. By the same way to finish other periods.

Remarks :

1. When setting the work period , the stop working time is not allowed to be set headed of the start working time.
2. If the working period need to cross the “ 0 ” point, it will need to set two working periods separately.

Interval Time Setting :

The diffuser has 5 to 300 seconds interval time.

After setting operation periods , touch **SET** , the LCD shows 

Which means the diffuser will spray for 30 seconds, touch  or 

to adjust it, touch **SET** to confirm and enter pause time , LCD shows 

Which means the diffuser will pause for 30 seconds , touch  or  touch

SET to finish.

10

CONCENTRATION SETTING

11



During the working period , we can touch  or  to check the fragrance intensity , and touch  to increase the intensity , touch  to decrease the intensity , final touch button **ENT** to save the setting and exit.

Class	1	2	3	4	5	6	7	8	9	10
Average Atomization Level (ml/h)	0.25	0.34	0.39	0.43	0.47	0.52	0.60	0.65	0.75	0.85

RESTORE FACTORY SETTINGS



FACTORY RESET

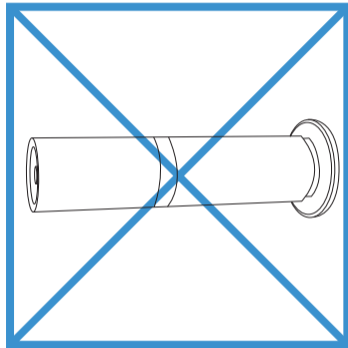
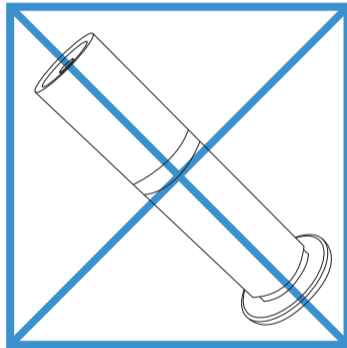
Touch and hold button **ENT** for 3 seconds , unit will make a long “ beep ” , the factory defaults are reset.

Local time: Sunday 00:00 ; working day : Sunday to Saturday ; Working period : 00:00 to 23:59 , working interval : spray 30s. pause 30s.

12

NOTE

13

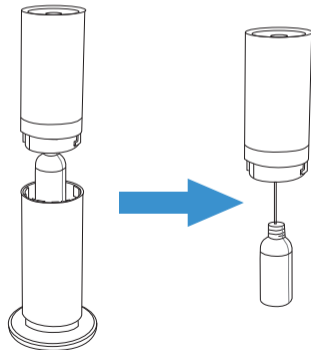


After fragrance bottle installed (with fragrance in it) , please keep the machine vertical, don't tilt or put down , to avoid the fragrance overflow, which will contaminated equipment circuit, affecting the normal use and unnecessary waste.

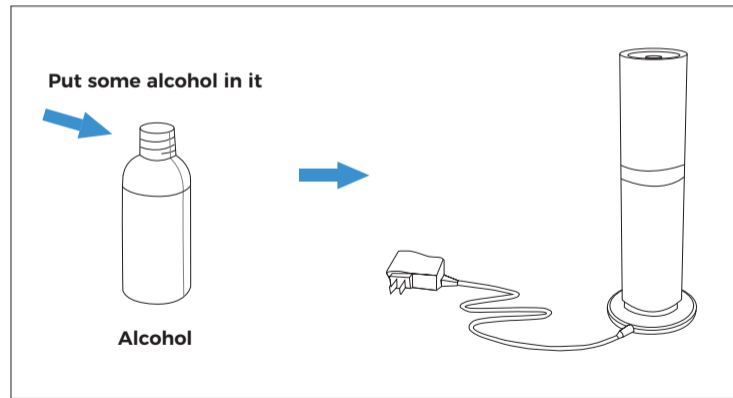
Every time when make a replacement of fragrance or after some time operations, the fragrances smoke come out from the nebulizer are less than before , we need to do a cleaning and maintenance.

Cleaning Steps :

Carefully open the equipment and take out the fragrance bottle, which the fragrances have been run out.



Put some alcohol into the bottle again , then install it on the equipment , and then turn on the equipment , let it work for 5 - 10 minutes.



COMMON FAULTS AND EXCLUSION

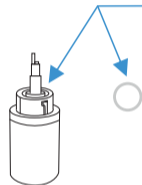
16

FAULTS	EXCLUSION
Not diffusion aroma	Check the unit is turned on. If pump doesn't work, replace the pump.
Small amount of fragrance coming out	Atomizing head is clogged , run alcohol through the unit for cleaning. Air pump is weak, replace a new air pump
Spray Liquid	The unit is tilted ; atomizing core is damaged , need to repalce a new one, Note: That residue may occur around the head of the nebulizer.
Oil spilled at the bottom the of diffuser	Bottle is loose , tighten the bottle.
Abnormal pump sound	Pump is loose , replace pump.

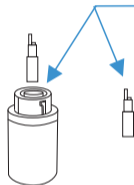
SPARE PARTS REPLACEMENT

17

When you refill oil, please check whether the O-ring is damaged. If it was damaged, replace it with extra O-ring.



When the unit does not diffuse any smoke or diffuse small smoke, replace the atomizer with new one.



EQUIPMENT CLEANING

- ❖ After cleaning, turn off the equipment.
- ❖ Take out the fragrance bottle again, and make a replacement of fragrance that you like, finally install on the machine carefully.